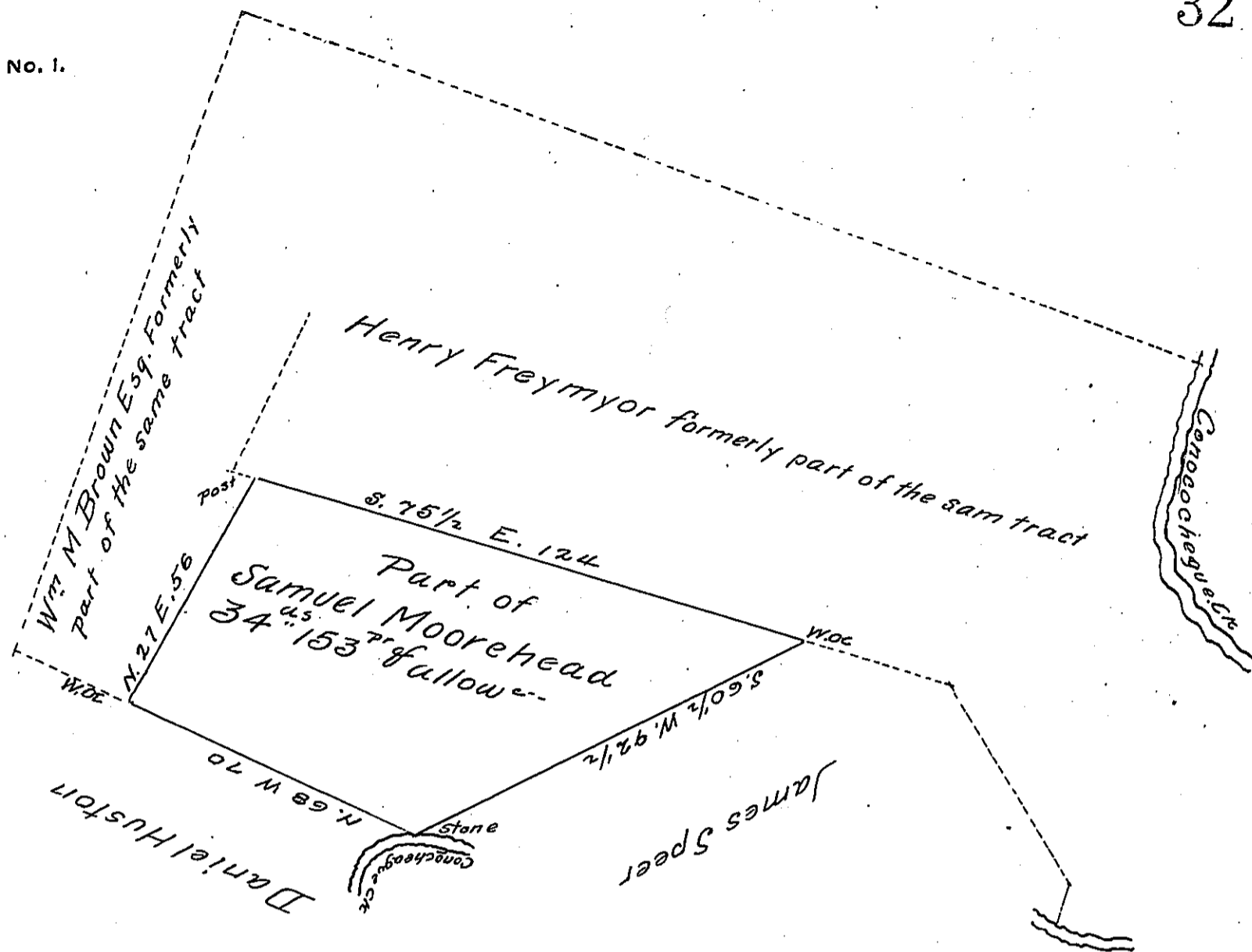


FORM NO. 1.



A Draught of a Tract or peice of Land situate in Hamilton Township Franklin (late Cumberland) County. Containing Thirty four acres and One hundred and fifty three perches and the usual allowance of Six p Cent for roads &c. being part of a tract of Three hundred and twenty seven acres and allowance which was surveyed in persuance of a Warrant granted Samuel Moorehead dated August 25th 1738.

Resurveyed and laid off from the other parts of the tract for Daniel Huston Novemb^r 5. 1811

Thomas Poe D.S.

To Andrew Porter Esq^r
Surveyor General of Penn^a

IN TESTIMONY that the above is a copy of the original remaining on file in the Department of Internal Affairs of Pennsylvania, made conformably to an Act of Assembly approved the 16th day of February, 1833, I have hereunto set my Hand and caused the Seal of said Department to be affixed at Harrisburg, this nineteenth day of February 1906

Isaac N. Brown
Secretary of Internal Affairs.